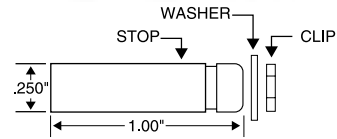
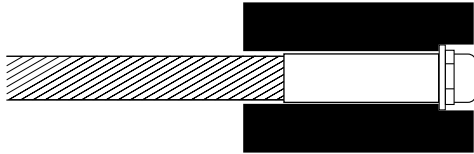


ULTRA-TEC® "Clip-on" STOP

For use in posts with cables cut and fittings attached at the factory. No field swaging is required. A special clip and washer secure the stop to the end post. Used on the non-tensioning end of the cable. An Adjust-A-Jaw®, Adjust-A-Body® or Invisiware® receiver is used on the opposite end to tension the cable. Available for 1/8" and 3/16" diameter cable only. Includes stop, washer and clip. Determine hardware for tensioning end and check with the factory to determine cable lengths to be provided with swaged fittings.



HOW IT WORKS



TYPE 316 STAINLESS STEEL

CABLE DIA.	FOR USE WITH	PART NO.	WASHER DIA.
1/8"	WOOD POST	COS-4	59/64" (.922")
3/16"	WOOD POST	COS-6	
1/8"	METAL POST	COS-4M	15/32" (.468")
3/16"	METAL POST	COS-6M	

2
12/1/07

Ultra-tec®
CABLE RAILING SYSTEMS



East Coast Cable Solutions
17 Woodside Ave., Thurmont, MD 21788
Phone 240-288-8050 • Fax 240-288-8041