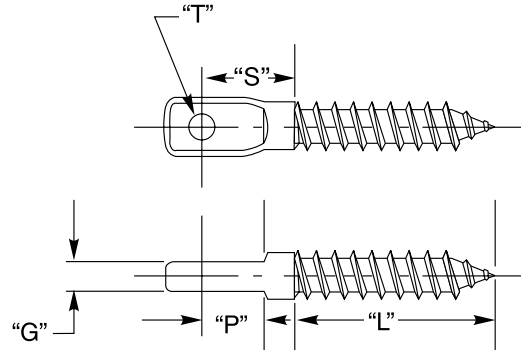


# LAG EYE

The **Lag Eye** fitting is used by screwing the lag threaded end of the fitting into a wooden end post. This will leave a paddle shaped eye exposed that will accommodate a Fixed Jaw, Adjust-A-Jaw® or Adjust-A-Body™ type fitting.



## TYPE 304 STAINLESS STEEL

CABLE DIA.	PART NO.	"G"	"T"	"S"	"L"	"P"	DRILL SIZE REQUIRED	MIN. NOMINAL TIMBER SIZE
1/8"	<b>LE-6</b>	.233"/.229"	.253"	.625"	1.50"	.125"	17/64"	4 X 4
3/16"	<b>LE-6</b>	.233"/.229"	.253"	.625"	1.50"	.125"	17/64"	4 X 4
1/4"	<b>LE-8</b>	.295"/.285"	.385"	1.188"	2.00"	.500"	3/8"	4 X 4

# ADJUST-A-JAW® TENSIONER

The Adjust-A-Jaw® tensioner is a clevis style fitting that provides a considerable amount of take-up. The Adjust-A-Jaw tensioner has four different elements: the clevis; the body; the lock nut; and the swaging ferrule (ordered separately).

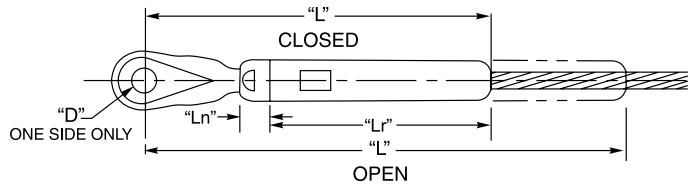
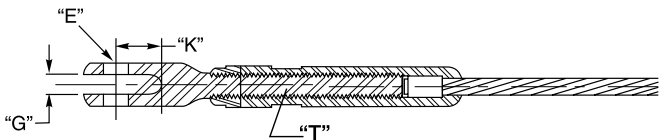
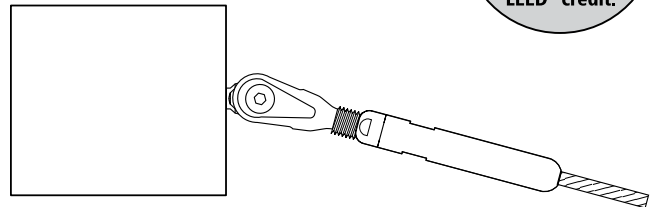
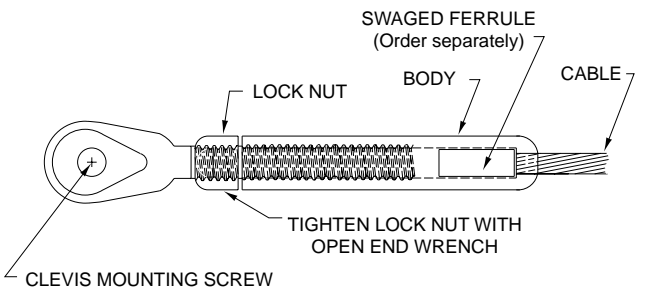
The clevis has a male thread that mates with a female thread within the body. The lock nut locks the male thread into place against the body after the assembly is properly tensioned. When the swaging ferrule is swaged onto the cable, it holds the body to the cable while also allowing the body to rotate on the cable during tensioning.

The Adjust-A-Jaw tensioner is the most streamlined clevis style adjusting mechanism available for its stated cable size. It is ideally suited for stair pitches and is also a very attractive fitting if you want the "high-tech" look of exposed stainless steel hardware on level runs as well as on stairways.



**GREEN**  
These products contain at least 65% recycled content, qualifying for LEED® credit.

## HOW IT WORKS



## TYPE 316 STAINLESS STEEL

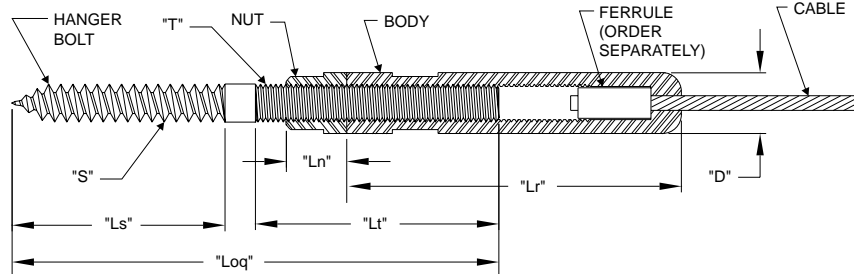
CABLE DIA.	PART NUMBER	*USE WITH FERRULE NO.	*USE WITH SCREW NO.	"D" DIA.	"E" THREAD	"G"	"K"	"L" CLOSED	"L" OPEN
1/8"	A-J62	F-4	SC-6	.260"	1/4-28	.260"	.56"	4.30"	5.99"
3/16"		F-6							
1/4"	A-J82	F-8	SC-8	.390"	3/8-24	.313"	.75"	4.87"	6.43"
5/16"	A-J122	F-10		.390"	3/8-24	.348"	.87"	6.74"	9.28"
3/8"		F-12							

\*Order Ferrule and Screw Separately.



# ADJUST-A-BODY® WITH HANGER BOLT TENSIONER

Similar to our regular Adjust-A-Jaw® tensioner, the Adjust-A-Body® with hanger bolt screws right into your wooden end post, to provide a sleek tensioning device that is easy to install and easy to adjust.



## TYPE 316 STAINLESS STEEL

CABLE DIA.	PART NUMBER	*USE WITH FERRULE NO.	"S"	"T"	"Ls"	"Lt"	"Loq"	"Ln"	"Lr"	"D"	DRILL SIZE REQ.	MIN. NOMINAL TIMBER SIZE
1/8"	A-JB6	F-4	5/16"	5/16-24 L.H.	1.50"	2.00"	3.75"	.375"	2.75"	.500"	13/64"	4 x 4
3/16"		F-6										
1/4"	A-JB8	F-8	7/16"	7/16-20 L.H.	2.00"	2.50"	4.75"	.500"	3.00"	.625"	5/16"	

\*Order Ferrule Separately.

East Coast Cable Solutions  
 17 Woodside Ave., Thurmont, MD 21788  
 Phone 240-288-8050 • Fax 240-288-8041



**Ultra-tec®**  
 CABLE RAILING SYSTEMS