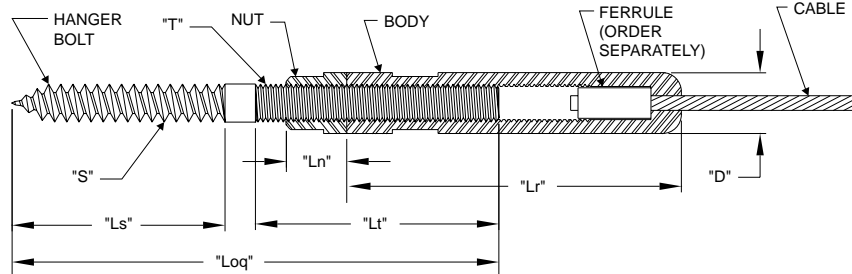


ADJUST-A-BODY® WITH HANGER BOLT TENSIONER

Similar to our regular Adjust-A-Jaw® tensioner, the Adjust-A-Body® with hanger bolt screws right into your wooden end post, to provide a sleek tensioning device that is easy to install and easy to adjust.



GREEN
These products contain at least 65% recycled content, qualifying for LEED® credit.

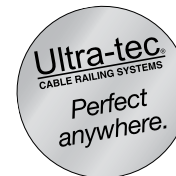


TYPE 316 STAINLESS STEEL

| CABLE DIA. | PART NUMBER | *USE WITH FERRULE NO. | "S" | "T" | "Ls" | "Lt" | "Loq" | "Ln" | "Lr" | "D" | DRILL SIZE REQ. | MIN. NOMINAL TIMBER SIZE |
|------------|-------------|-----------------------|-------|--------------|-------|-------|-------|-------|-------|-------|-----------------|--------------------------|
| 1/8" | A-JB6 | F-4 | 5/16" | 5/16-24 L.H. | 1.50" | 2.00" | 3.75" | .375" | 2.75" | .500" | 13/64" | 4 x 4 |
| 3/16" | | F-6 | | | | | | | | | | |
| 1/4" | A-JB8 | F-8 | 7/16" | 7/16-20 L.H. | 2.00" | 2.50" | 4.75" | .500" | 3.00" | .625" | 5/16" | |

*Order Ferrule Separately.

East Coast Cable Solutions
17 Woodside Ave., Thurmont, MD 21788
Phone 240-288-8050 • Fax 240-288-8041



Ultra-tec®
CABLE RAILING SYSTEMS