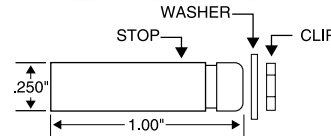
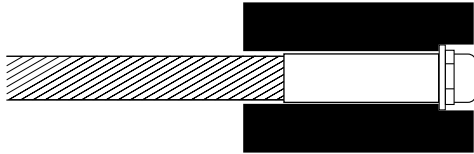


# ULTRA-TEC® "Clip-on" STOP

For use in posts with cables cut and fittings attached at the factory. No field swaging is required. A special clip and washer secure the stop to the end post. Used on the non-tensioning end of the cable. An Adjust-A-Jaw®, Adjust-A-Body® or Invisiware® receiver is used on the opposite end to tension the cable. Available for 1/8" and 3/16" diameter cable only. Includes stop, washer and clip. Determine hardware for tensioning end and check with the factory to determine cable lengths to be provided with swaged fittings.



## HOW IT WORKS



### TYPE 316 STAINLESS STEEL

CABLE DIA.	FOR USE WITH	PART NO.	WASHER DIA.
1/8"	WOOD POST	<b>COS-4</b>	59/64" (.922")
3/16"	WOOD POST	<b>COS-6</b>	
1/8"	METAL POST	<b>COS-4M</b>	15/32" (.468")
3/16"	METAL POST	<b>COS-6M</b>	

2  
12/1/07

**Ultra-tec®**  
CABLE RAILING SYSTEMS



**All Ultra-tec® hardware is manufactured in the United States of America.**

*East Coast Cable Solutions*  
17 Woodside Ave., Thurmont, MD 21788  
Phone 240-288-8050 • Fax 240-288-8041